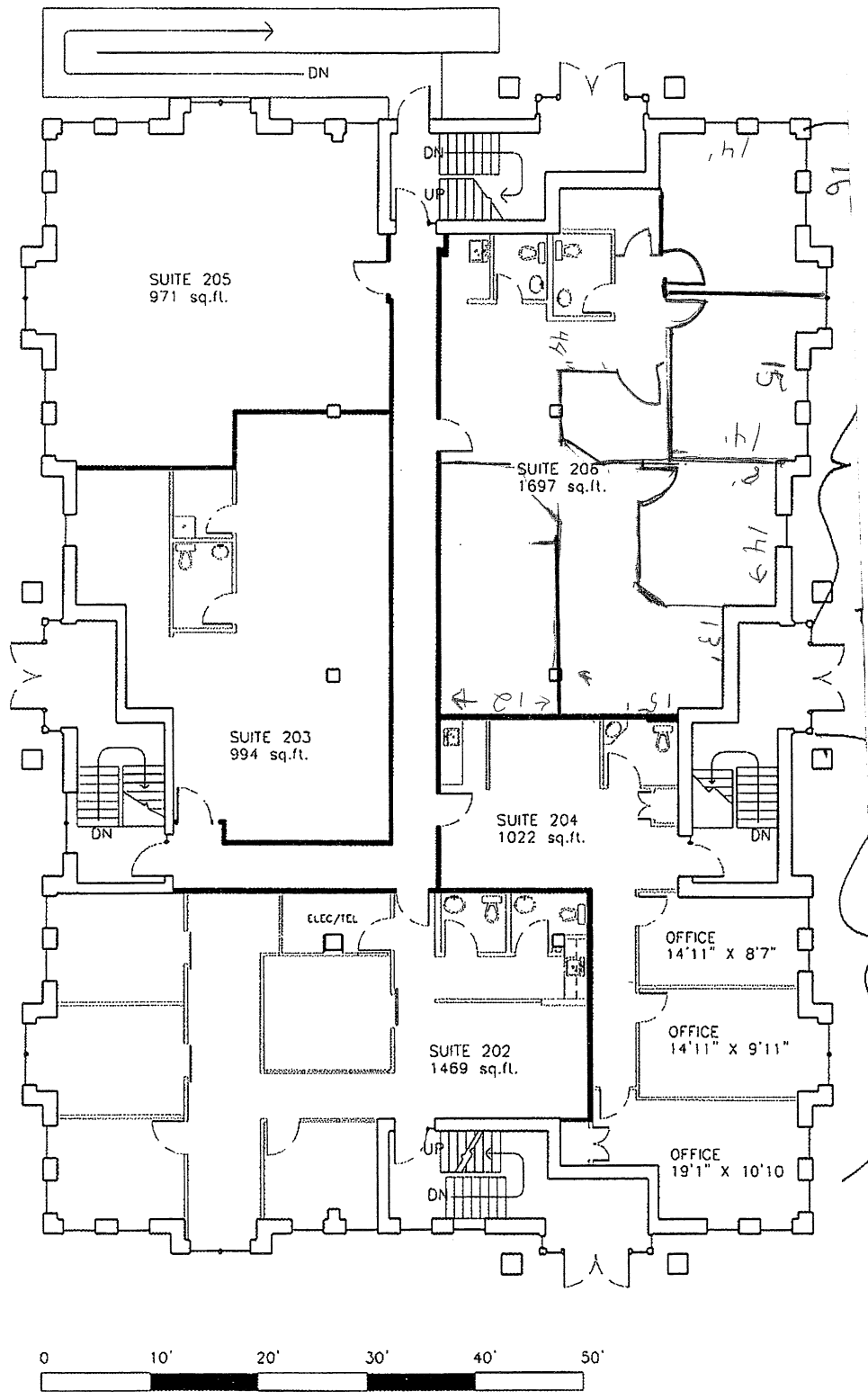


BUILDING AREAS AND CONFIGURATION AS MEASURED BY PPL  
 PROFESSIONAL SERVICES INC., APR 03, 2002.  
 SUITE 202 PARTITIONS UPDATED NOV 12, 2004  
 (BOMA'96 Tenant Reliable Areas Shown)



Arch. Drawn Date: 2. 2004. 211-1013 Fax: 416-494-0740 www.birch-oak.com - for CREIT Management Ltd. 17Nov04



OFFICES at BIRCH OAK,  
 LEVEL 2 FLOOR PLAN,  
 243 NORTH SERVICE ROAD  
 OAKVILLE, ONTARIO