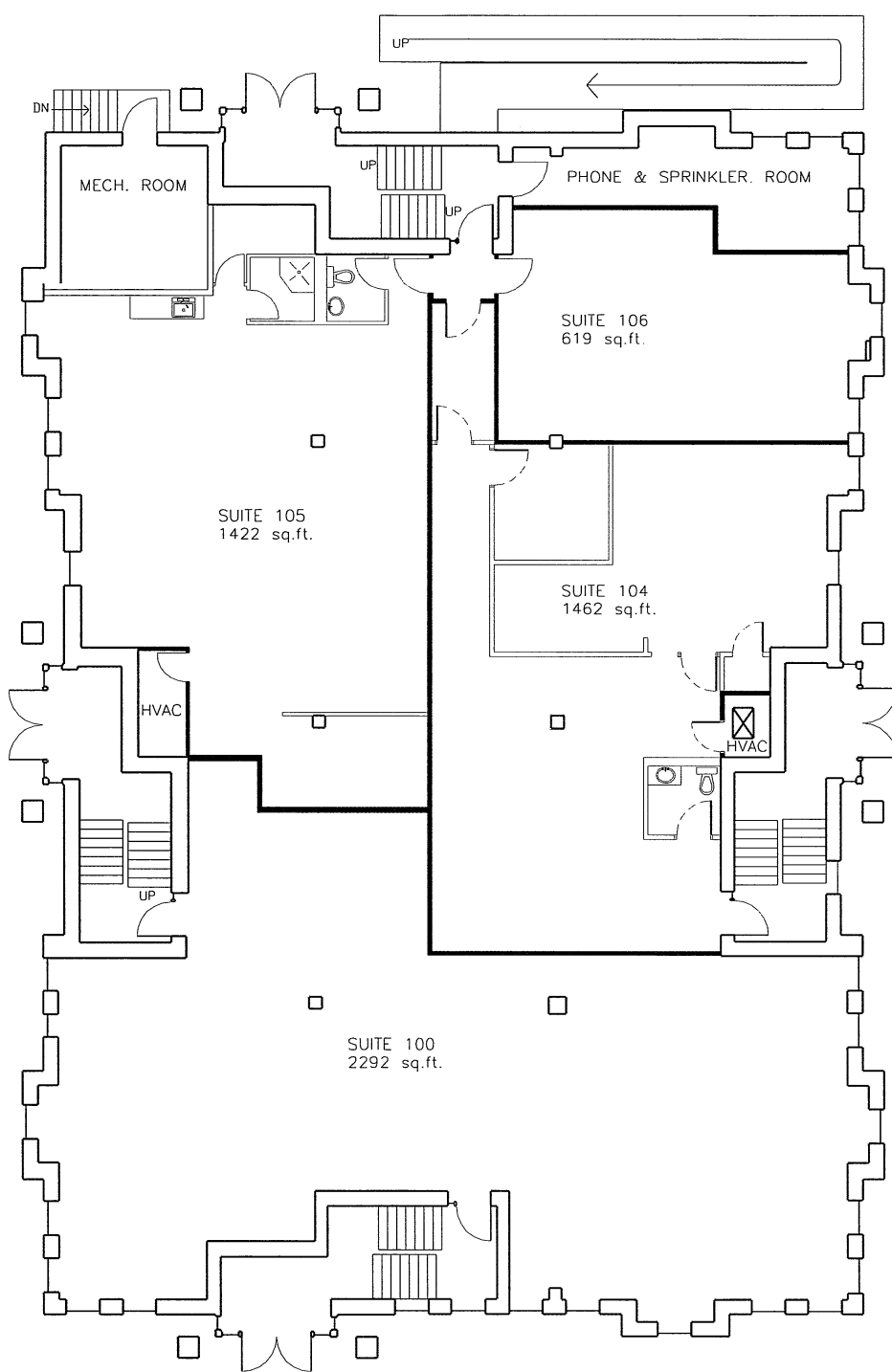


BUILDING AREAS AND CONFIGURATION AS MEASURED by PPL
PROFESSIONAL SERVICES INC., APR 03, 2002.
SUITE 104 PARTITIONING AS PER 2005 TENANT DRAWINGS.
(BOMA'96 Tenant Rentable Areas Shown)



Jack Hope, Data & records collection, storage & retrieval, ph.: 416 251-1013, fax: 416 605-9740, email:jhope.creit@rogers.com - for CREIT Management Ltd. 17Nov06



OFFICES at BIRCH OAK,
LEVEL 1 FLOOR PLAN,
251 NORTH SERVICE ROAD,
OAKVILLE, ONTARIO

